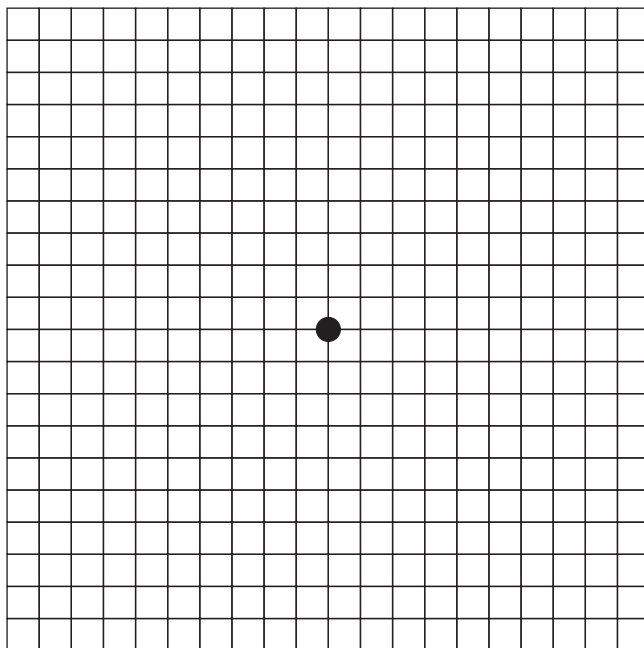




AMSLER RECORDING CHART



INSTRUCTIONS

- The chart is to be viewed in normal room illumination / light
- Place the chart at normal reading distance (28-38 cms)
- Wear the reading spectacles and view the chart with one eye covered
- Throughout the entire examination keep looking at the central fixation spot. Do not look anywhere else.
- While looking at the central fixation spot. Check whether:
 1. Is the centre spot visible?
 2. While viewing the centre black spot, can you see all four sides?
 3. Do you see the entire grid intact? Is any area within the grid not visible?
 4. Are the horizontal and vertical lines straight and parallel?
 5. Are all the squares of equal size and shape?
- If you notice any blurring or distortion of the lines, or you are unable to see any part of the grid, consult your ophthalmologist immediately.

Disclaimer: Information published here is for educational purposes

Compiled by
DR. VINAY GARODIA
CONSULTANT OPHTHALMOLOGIST
MBBS (AIIMS), MD (AIIMS, Gold Medallist)
DNB, MNAMS, FRCS (England)
Mobile: 9811084552



VISITECH
A Unit of Visitech Hospital Pvt. Ltd.

Visitech Eye Centre

R-13, Greater Kailash-I, New Delhi - 110 048
Tel: 41731777, 41731888